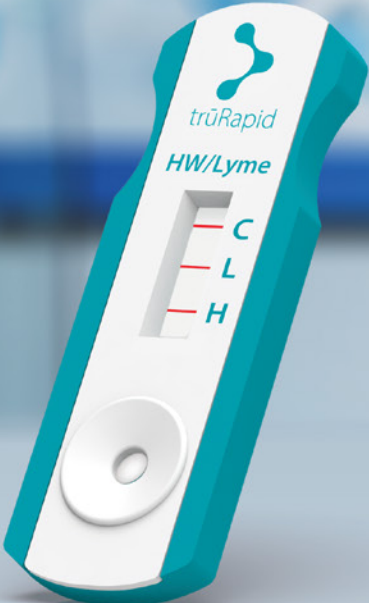


NEW



trūRapid HW/Lyme

Expand care for dogs currently only receiving heartworm testing. Provides Lyme antibody detection with C6 technology - no cross-reactivity with Lyme vaccines.¹

Focus on canine wellness with fast, accurate, and easy-to-use rapid testing.



- 10 minutes to results
- Room temperature storage
- Excellent specificity and sensitivity
- No sample preparation steps

www.heska.com



trūRapid HW/Lyme

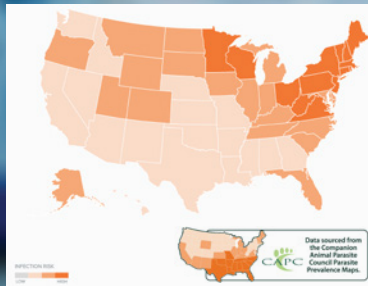
Rapid in-house detection of *Dirofilaria immitis* (heartworm) antigen and *Borrelia burgdorferi* antibody

...with accurate results in 10 minutes.

Catch it early!

Heartworm incidence is on the rise nationwide, and distribution of Lyme disease is expanding beyond the historically endemic areas. Regular screening for these diseases is more important than ever! Streamline care with easy-to-use and highly accurate diagnostics.

Canine Lyme Disease Prevalence map from CAPC indicates there are no "low risk" US states. ²



trūRapid™ Heartworm			
N= 270	DiroCHEK®		
		Positive	Negative
trūRapid <i>Dirofilaria immitis</i> (heartworm) Antigen	Positive	150	2
	Negative	0	118
Sensitivity	100% (95% CI: 98–100%)		
Specificity	98% (95% CI: 94–100%)		
trūRapid™ Lyme			
N= 270	Lyme IFA ³		
		Positive	Negative
trūRapid <i>Borrelia burgdorferi</i> Antibody	Positive	103	3
	Negative	1	163
Sensitivity	99% (95% CI: 95–100%)		
Specificity	98% (95% CI: 99–100%)		

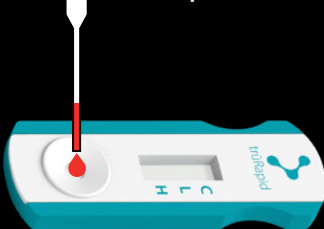
Note: Data on file.

Accuracy, Reliability, Speed, and Ease-of-Use ...

- No refrigeration needed
- 10 minutes to results
- Excellent specificity/sensitivity
- Single, easy-to-use cassettes - no sample preparation required
- Utilize anti-coagulated whole blood, serum, or plasma

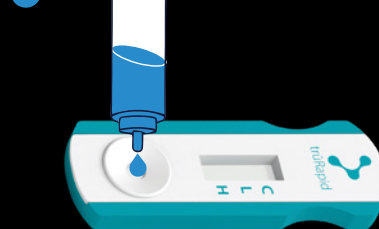
SIMPLE 3 STEP PROCESS

x1 Sample



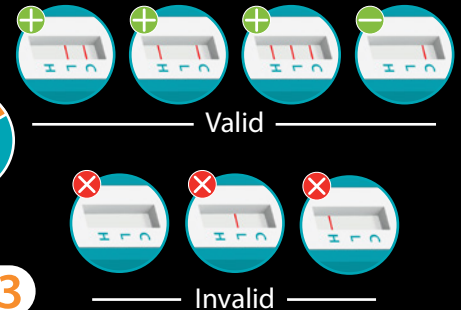
1

x2 Chase Buffer



2

10 mins



3

1. Detects patient antibodies against the C6 peptide derived from the VlsE protein of *Borrelia burgdorferi*, the causative agent of Lyme disease.
 2. CAPC Prevalence map accessed on 7/15/2024 - <https://capcvet.org/maps/#/2024/all-year/lyme-disease/dog/united-states>.
 3. VMRD - SLD-IFA-LD test.